



APARTMENT 22, MASTER WILLIAMS PLACE FOLKESTONE, CT20 1FF

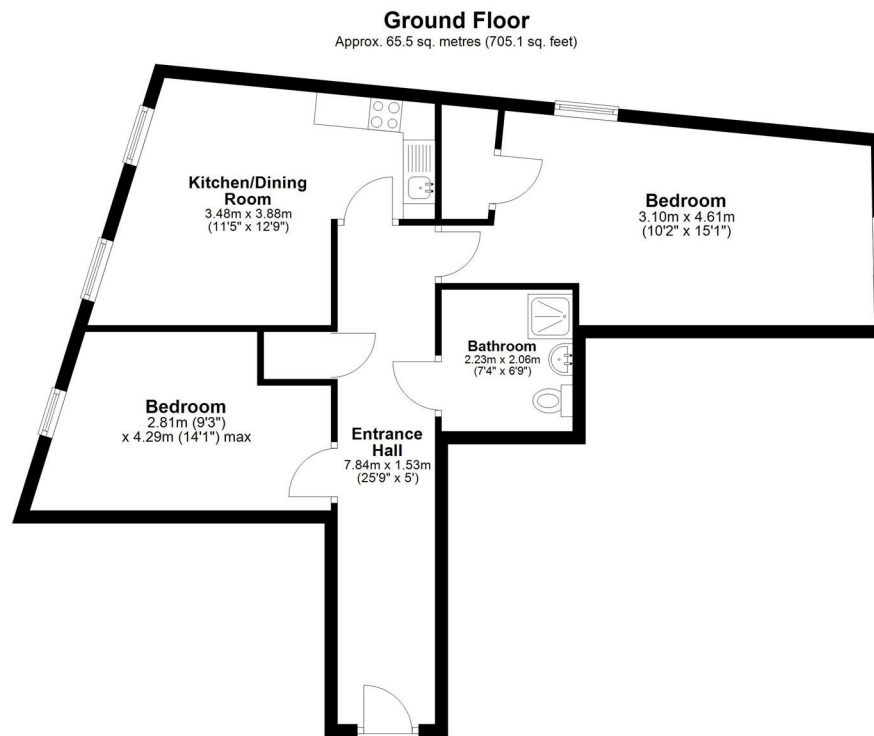
£1,195 PER MONTH

Welcome to this stunning new apartment located in the highly sought-after Master William's Place, Folkestone. Completed in 2025, this exceptional property spans an impressive 705 square feet, offering a modern and comfortable living experience.

The apartment features two well-sized bedrooms, providing ample space for rest and privacy. With a stylish bathroom, convenience is assured, making daily routines a breeze.

The location is equally appealing, just a short stroll from the vibrant Creative Quarter, the charming Folkestone Harbour Arm, and the historic Old High Street. Here, you can explore a delightful array of shops, cafes, and cultural attractions, making it a perfect spot for those who appreciate a lively community.

**WEST END
ESTATES**
LETTINGS AND PROPERTY MANAGEMENT



Total area: approx. 65.5 sq. metres (705.1 sq. feet)

Whilst every attempt has been made to ensure the accuracy of the floorplan contained here, measurements of doors, windows, rooms and any other items are approximate and no responsibility is taken for any error, omission or mis-statement. This plan is for illustrative purposes only and should be used as such by any prospective purchaser. The services, systems and appliances shown have not been tested and no guarantee as to their operability or efficiency can be given.
Plan produced using PlanUp.



| Energy Efficiency Rating | | |
|---|----------------------------|-----------|
| | Current | Potential |
| Very energy efficient - lower running costs | | |
| (92 plus) A | | |
| (81-91) B | 83 | |
| (69-80) C | | |
| (55-68) D | | |
| (39-54) E | | |
| (21-38) F | | |
| (1-20) G | | |
| Not energy efficient - higher running costs | | |
| England & Wales | EU Directive 2002/91/EC | |

EPC Rating: B Council Tax Band: B

Agents Note: Whilst every care has been taken to prepare these particulars, they are for guidance purposes only. All measurements are approximate and are for general guidance purposes only and whilst every care has been taken to ensure their accuracy, they should not be relied upon and potential buyers/tenants are advised to recheck the measurements

West End Estates Folkestone
7 Sapper Row
Folkestone
Kent
CT20 3WT

01303 478777
office@westend-estates.co.uk

**WEST END
ESTATES**
LETTINGS AND PROPERTY MANAGEMENT